

Work Package 1: CONCEPTUAL FRAMEWORK OF GREEN INFRASTRUCTURE ASSESSMENT

Duration: July 2017 - December 2018

As a first objective MaGICLandscapes identified the specific **informational needs regarding green infrastructure (GI) at the European, regional and local level** based on the practical experiences of project partners and stakeholders as well as through a literature review. During this process partners researched where GI is currently positioned within national laws and policies and where the multifunctional approach of GI can support policies and objectives from various sectors at all territorial levels. Furthermore, it covered the identification of international and territorial needs for a GI approach and its contribution to sustainable development. It shows how a GI approach can address specific territorial and common challenges.

The second objective was assessing the **green infrastructure (GI) resource at transnational and regional scale**. The partners and associated institutions developed a methodology on how to identify GI based on existing European and regional datasets. The results were ground-truthed in nine selected case study areas. The re-integration of experiences and empirical findings delivered an iterative improvement, ensuring validity and that territorially specific needs are recognised in the transnational assessment development process.

OUTPUTS

Handbook of Conceptual and Theoretical Background, Terms and Definitions

- Fundamentals of GI
- Definition of GI and related terms
- GI in territorial laws/policies of the European Union, Austria, the Czech Republic, Germany, Italy and Poland
- Central European and specific regional needs for GI assessment

The Handbook can be used as aid for supporting GI-related actions and investments.

Manual of Transnational Green Infrastructure Assessment, Decision-Support Tool

- Evaluation of European Geodata and its suitability for assessing GI
- Guide for large-scale GI assessment
- Provision of a GI ground-truthing method
- Presentation of a transnational GI classification scheme
- Maps of GI in Central Europe and in each case study area

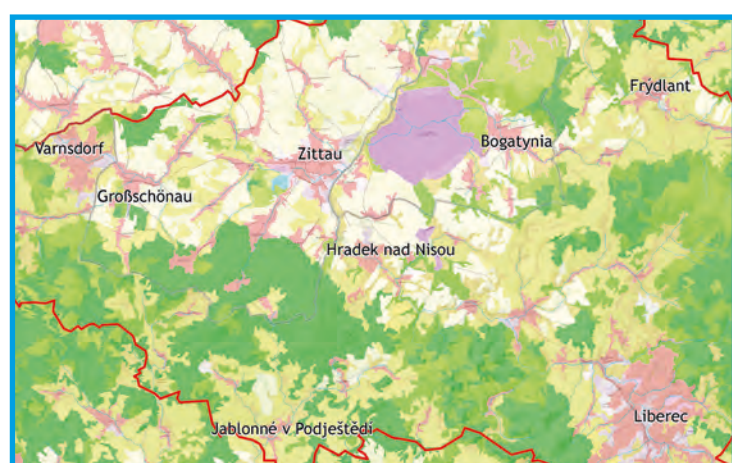
The Manual enables stakeholders all over Europe to map and assess the GI resource.

Regional Maps of Green Infrastructure

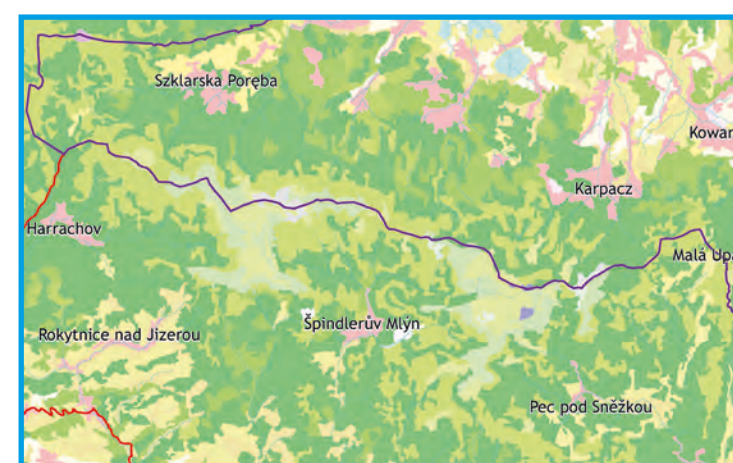
- Based on transnational map of GI
- Illustration of types and structure of GI at the regional level by means of specific biotope and land use datasets
- Refined GI classification schemes, coordinated with the transnational GI classification scheme

The Regional Maps help decision-makers to identify the regional/local GI resource.

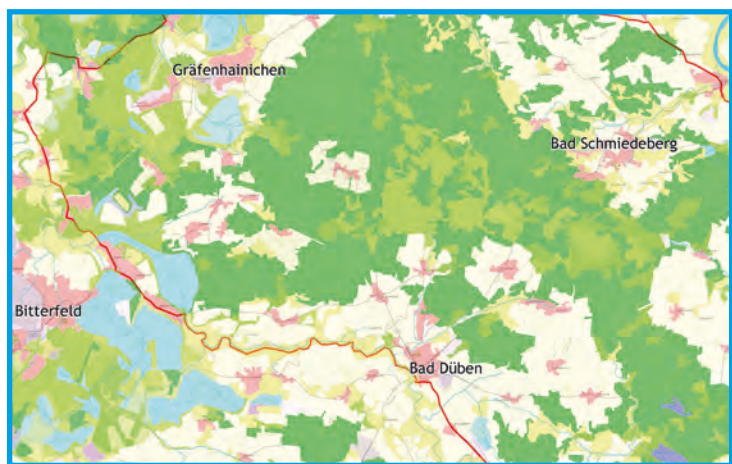
All three outputs can be used as decision-support tools within regional planning and landscape management.



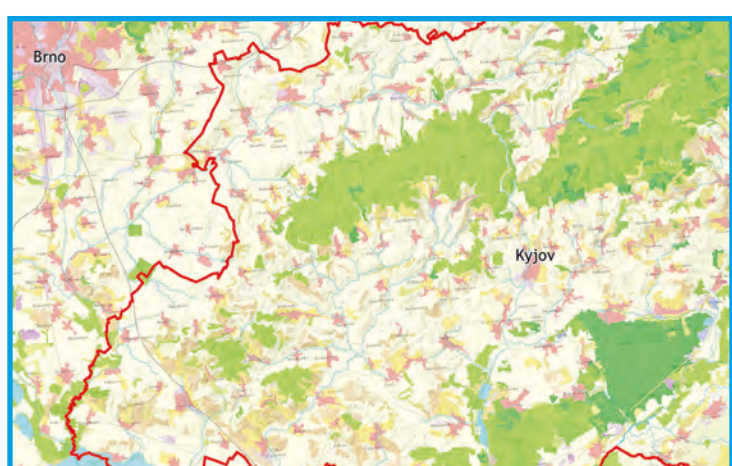
Tri-Border area Czech Republic, Germany, Poland



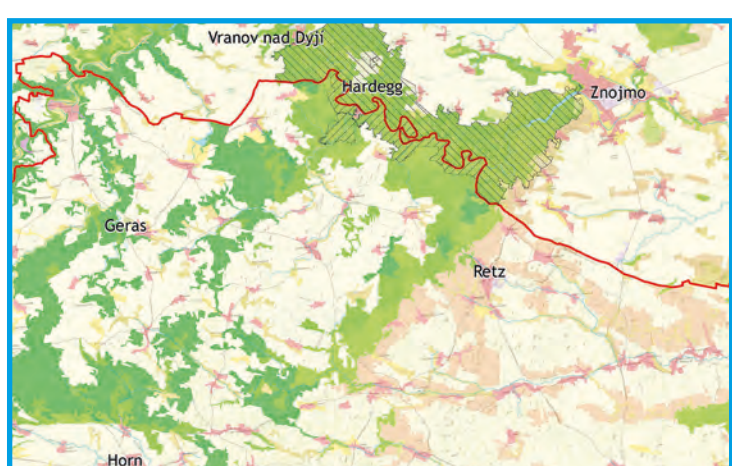
Karkonosze and Krkonoše National Parks, Poland and the Czech Republic



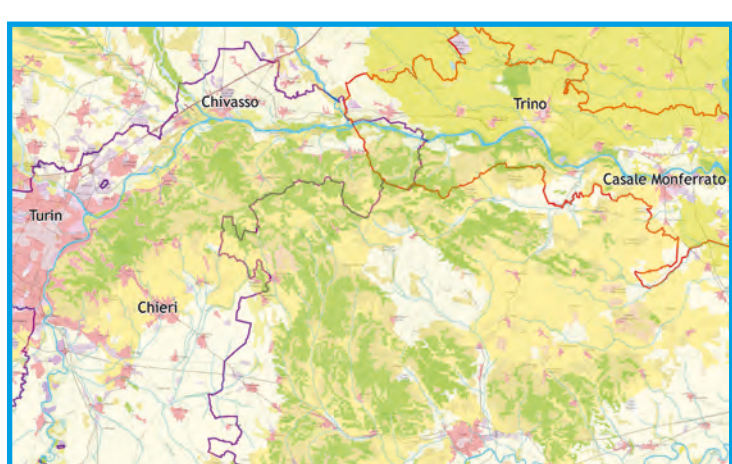
Dübener Heide Nature Park, Germany



Kyjovsko, Czech Republic



Eastern Wald- and Western Waldviertel including Thayatal National Park, Austria



Turin, Po Hills around Chieri and Upper Po Plain, Italy



No. 3