

PILOT ACTIVITY CONCEPT & LAUNCH REPORT

D.T2.3.1

Work paper

Version
1.0
12.2019

1) Introduction

Railway Line Ljubljana Kočevje is a regional line connecting TEN-T corridor through Ljubljana with significant potential for new freight traffic and shifting freight from road to rail. In town Grosuplje, situated along Ljubljana Kočevje railway line, there is a big logistics centre without rail connection and handling thousands of cars per year, which are currently carried by and there is a big opportunity for shifting freight to rail. One of the options is construction of side track connecting logistic centre which nearby railway line.

The main REIF pilot activity is preparation of the documentation (including design) for construction of a side track (siding). The track construction itself is not part of the pilot.

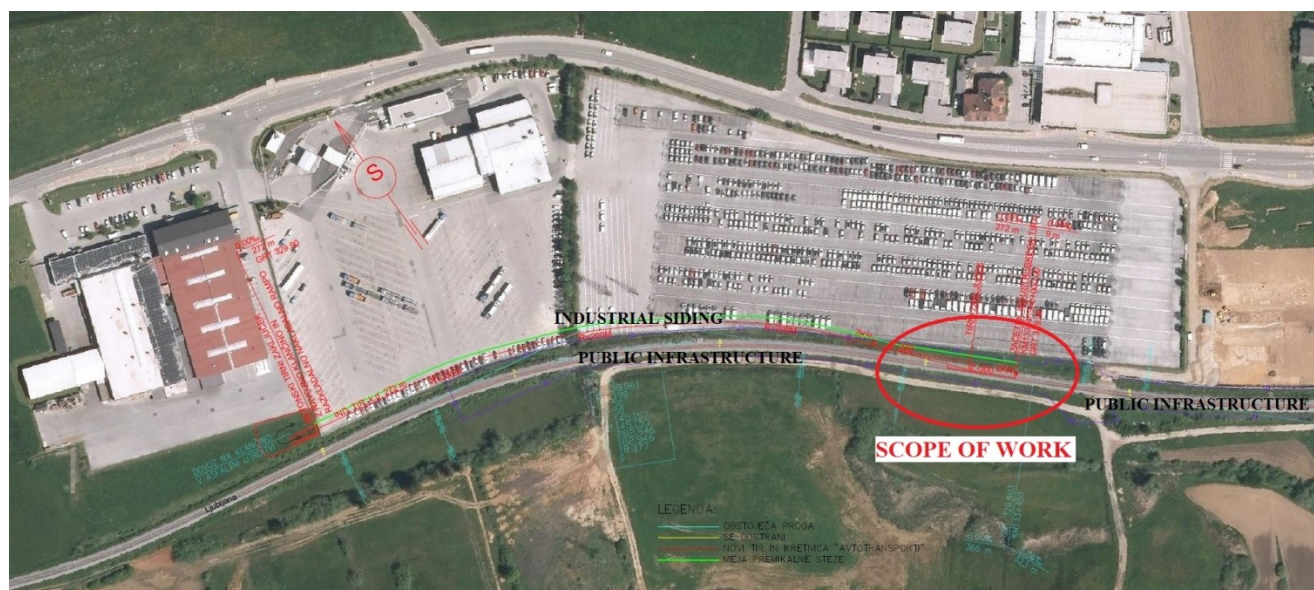
2) Pilot action description

PP involved	Prometni institut Ljubljana (PIL)
Timescale (start/end date)	August 2020 – April 2021
Main actors/stakeholders involved	Local industry (logistics centre), Local municipalities, Rail transport operators, Ministry of infrastructure and its departments Infrastructure manager, Development institutions at local or regional level
Pilot action launch <i>Please describe when and how the pilot action was launched</i>	The pilot action started in summer 2020 when agreement on pilot action with local logistics centre was reached
Description of the activities to be done within the pilot action	<ul style="list-style-type: none"> - agreement on pilot action with local logistics centre - preparation of technical specification for the pilot activities - preparation and publish a tender for external provider - preparation of the documentation (including design) for construction of a side track (siding) including connection to the public railway infrastructure

	<ul style="list-style-type: none"> - presenting the documentation to the public authorities - preparing revision and final documentation
Expected results	<p>The documentation for connecting Ljubljana-Kocevje railway line and car logistics centre Grosuplje via industrial side track: preparation of documentation/design for constructing of track and missing link between private and public part of rail infrastructure.</p> <p>When constructed (not a part of the pilot) will enable a mass shifting of freight transport (cars) from road to rail</p>
Potential risks of the successful outcome of the pilot action and the adopted strategies to overcome them	<p>The main risks are possible problems with approval of the project documentation by competent stakeholders/authorities (Ministry, Infrastructure manager)</p> <p>But this risk can be mitigated or significantly reduced by the involvement of these stakeholders already during the REIF pilot preparation.</p>

3) Conclusion

The specifications for pilot were already prepared and are necessary for tender for preparing the documentation by external provider. The description of location and planned connection of logistics centre with regional railway line is presented below.



Wider area of pilot with marked missing link between private and public part of rail infrastructure



Missing link between private and public part of rail infrastructure (siding construction area)



Car logistics centre for located near regional railway line Ljubljana-Kočevje