



TAKING
COOPERATION
FORWARD

PROLINE-CE

Project Presentation

PROLINE-CE: THE PROJECT

Part 1
Funding
Programme

Part 2
Facts & Figures
Partnership

Part 3
Objectives &
Target groups
Goals
Solutions

Part 4
Structure &
Timeline

Part 5
Workpackages

Part 6
Outputs &
Results

Part 7
EU Relevance



Central EUROPE 2014 - 2020

Geographical Scope:

- Austria
- Croatia
- Czech Republic
- Germany (Baden-Württemberg, Bayern, Berlin, Brandenburg, Mecklenburg-Vorpommern, Sachsen, Sachsen-Anhalt, Thüringen)
- Hungary
- Italy (Emilia-Romagna, Friuli Venezia Giulia, Liguria, Lombardia, Piemonte, Provincia Autonoma Bolzano, Provincia Autonoma Trento, Valle d'Aosta, Veneto)
- Poland
- Slovak Republic



Central EUROPE 2014 - 2020: Priorities

1. Cooperating on innovation to make CE more competitive:

- 1.1 To improve sustainable linkages among actors of the innovation systems for strengthening regional innovation capacity in central Europe
- 1.2 To improve skills and entrepreneurial competences for advancing economic and social innovation in central European Regions

2. Cooperating on Low Carbon strategies in CE:

- 2.1 To develop and implement solutions for increasing energy efficiency and renewable energy usage in public infrastructures
- 2.2 To improve territorially based low-carbon energy planning strategies and policies supporting climate change mitigation
- 2.3 To improve capacities for mobility planning in functional urban areas to lower CO2 emissions

3. Cooperating on natural and cultural resources for sustainable growth in CE:

- 3.1 To improve integrated environmental management capacities for the protection and sustainable use of natural heritage and resources
- 3.2 To improve capacities for the sustainable use of cultural heritage and resources
- 3.3 To improve environmental management of functional urban areas to make them more liveable places

4. Cooperating on transport to better connect CE:

- 4.1 To improve planning and coordination of regional passenger transport systems for better connections to national and European transport networks
- 4.2 To improve coordination among freight transport stakeholders for increasing multimodal environmentally-friendly freight solutions



Central EUROPE 2014 - 2020: Priorities

3. Cooperating on natural and cultural resources for sustainable growth in CE:

3.1 To improve integrated environmental management capacities for the protection and sustainable use of natural heritage and resources

3.2 To improve capacities for the sustainable use of cultural heritage and resources

3.3 To improve environmental management of functional urban areas to make them more liveable places



Central EUROPE 2014 - 2020: Funding

➤ 246,5 MEUR ERDF

Total programme budget: **298,9 MEUR**

ERDF allocation per priority:

Innovation	69,0 MEUR
Low carbon	44,4 MEUR
Natural and cultural resources	88,8 MEUR
Transport	29,6 MEUR

ERDF co-financing rate:

85% CZ, HR, HU, PL, SK, SI

80% AT, DE, IT



Facts & Figures

Priority	3. Cooperating on natural and cultural resources for sustainable growth in CENTRAL EUROPE
Programme objective	3.1 To improve integrated environmental management capacities for the protection and sustainable use of natural heritage and resources
Duration	01.07.2016 - 30.06.2019 (36 months)
Partners	13 partners and 5 APs from 8 countries
Total budget	€ 2.750.209,47
Thereof ERDF funds	€ 2.267.296,07



Partnership

- ★ 13 partners from 7 countries
- ★ 5 associated partners from 4 countries



PART 2 - PROLINE-CE PARTNERSHIP

Partnership

Austria	Slovenia	Hungary	Croatia	Italy	Poland	Germany	Slovakia
PP1 (LP)	PP4	PP6	PP8	PP9	PP10	PP12	AP15
BMLFUW Austrian Federal Ministry of Agriculture, Forestry, Environment and Water Management	UL University of Ljubljana	HOI Herman Otto Institute	HGI-CGS Croatian Geo- logical Survey	ARPAE Reg. Agency for Prevention, Environment and Energy in Emilia-Romagna	KZGW National Water Management Authority	HRBM Technical University of Munich	Global Water Partnership Central and Eastern Europe
PP2	PP5	PP7	AP16	PP11	PP13	AP14	
MA31 Municipality of the City of Vienna, MA31, Vienna Water	JP VO-KA Public Water Utility VODOVOD- KANALIZACIJA Ljubljana	OVF General Directorate of Water Management	Croatian Waters	CMCC Euro-Medi- terranean Centre on Climate Change Foundation	GPW Silesian Water- works PLC	Department of Silviculture and Mountain Forest	
PP3					AP17		
MWY Municipality of Waidhofen/Ybbs					Reg. Water Management Board		
					AP18		
					University of Silesia		



Objectives & Target Groups

Main objective

Improved protection of drinking water resources as well as protection against floods/droughts in an integrated land use management approach

Specific objectives

Operationalisation of best practice strategies for water protection

Strategies for the implementation of land-use management concepts for drinking water protection

Capacity building for relevant stakeholders and administrations through panel discussions, workshops and dialogues

Target groups

Local, regional & national public authorities; water suppliers; universities and research institutions; interest groups incl. NGOs; international organisations; general public; national park administrations and different services



Goals at a Glance






The main objective of PROLINE-CE is the improved protection of drinking water resources as well as protection against floods/droughts in an integrated land use management approach. This encompasses

- jointly developed methods and strategies towards an integrated and efficient approach of water management and proposed measures to adapt existing practices
- minimized conflicts between drinking water resources protection and land use activities
- integrated land-use management and a developed implementation strategy for effectively harmonized environmental standards in drinking water recharge areas to improve water- and soil quality and reduce flood/drought risks
- extended cooperation networks and knowledge exchange between partner regions, sector players and different decision makers on policy level to minimize still existing knowledge gaps
- improved effectiveness and sustainable use of capacities as well as efficient organisational structures of land use management and drinking water protection



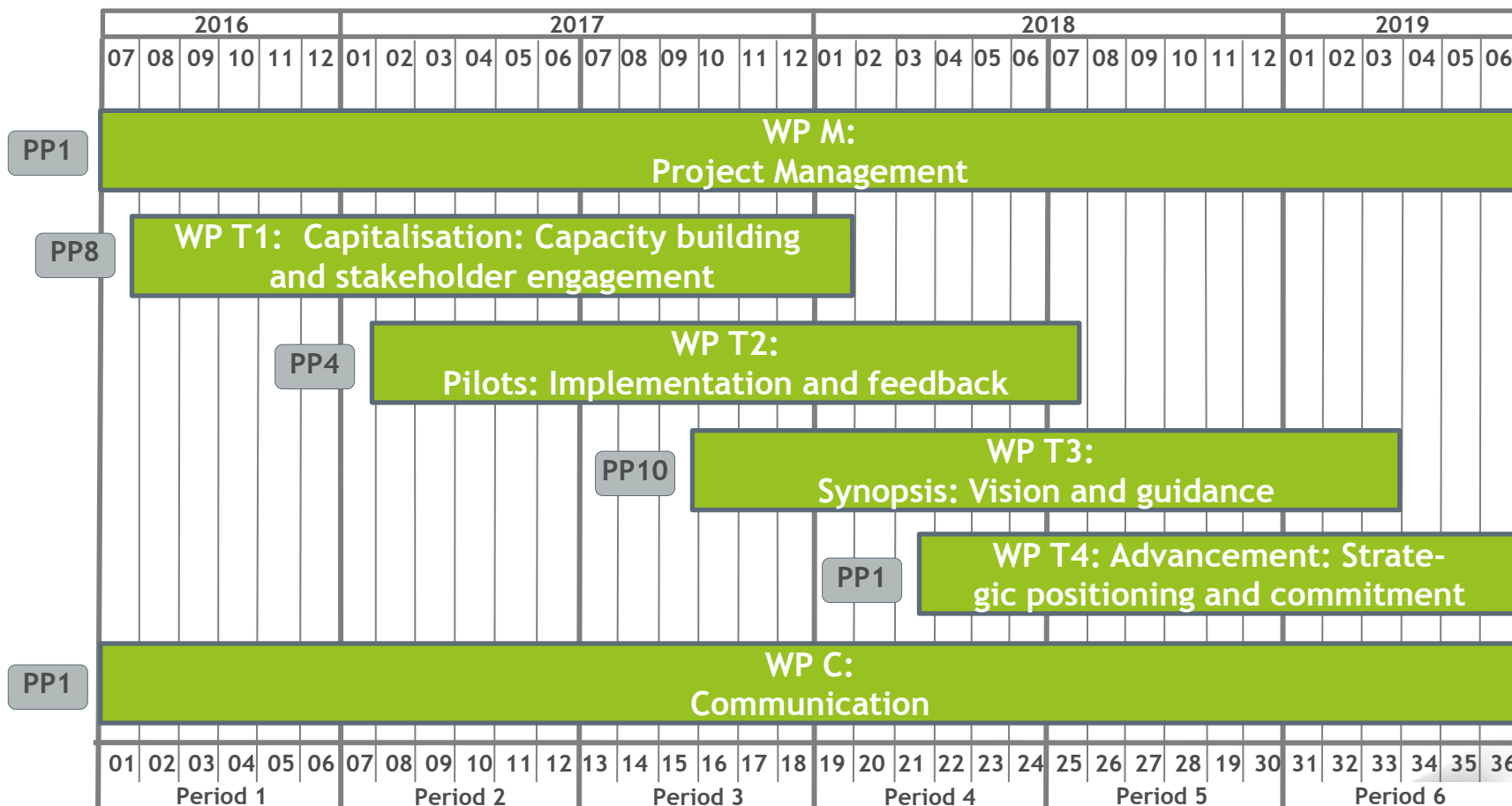
Innovative Solutions

PROLINE-CE's innovative approach

-  Synopsis of comprehensive experiences gained within previous projects and studies as a basis for determination of sustainable land use and best management practices for drinking water supply
-  Operationalization of best practice strategies in different pilot actions, clustered on a transnational scale by their thematic and geographic scope
-  Common methodology and vision for integrated water management as an overall frame for the implementation of best practices resulting in “GOWARE” (Guide towards Optimal WATER REgime)
-  Transfer of PROLINE-CE results to policy level by means of DriFLU Charta, a joint declaration act signed by notable representatives
-  Capacity building inside and outside of the programme area via several events and feedback loops for stakeholders with the possibility of public participation as well as different communication measures tailored to the needs of diverse target groups.



PART 4 - STRUCTURE & TIMELINE



PART 5 - WORKPACKAGES

WP T1

Capitalisation: Capacity building and stakeholder engagement

Current best land-use management practices for drinking water resources in each partner country are peer reviewed and strategies as well as measures to be possibly integrated in existing policy guidelines are identified by means of intensive stakeholder involvements.

WP T3

Synopsis: Vision and guidance

Building upon outcomes of the previous work packages T1 + T2 an overall frame for the implementation of best management practices for drinking water protection (GOWARE - CE transnational Guide towards Optimal Water Regime) is carried out, supplemented by information about adequate transfer to stakeholders.

WP T2

Pilots: Implementation and feedback

Within 8 Pilot areas - clustered according to their geographic specification and natural site characteristics - status-quo of land-use management practices is verified and possibilities of improvement as well as implementation of best suitable, efficient measures in terms of drinking water protection assessed.

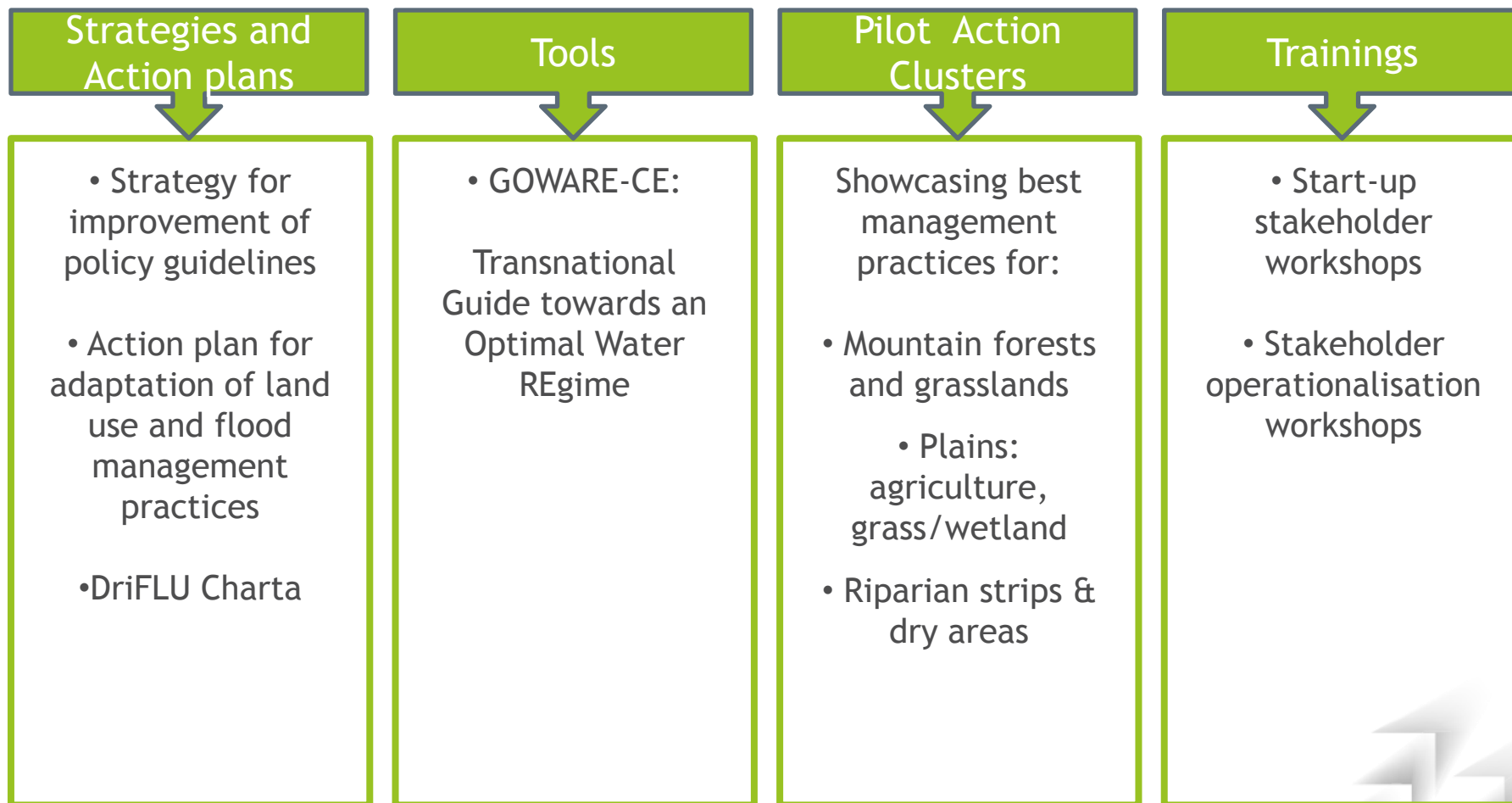
WP T4

Advancement: Strategic positioning and commitment

Through different transnational workshops and discussions a compilation of identified and committed targets towards effective and efficient function-oriented land-use management practices is summarized and combined in a joint declaration act (DriFLU - Drinking Water/Floods/Land-Use-Charta), signed by notable representatives of each participating country.



Project Outputs



Project Results

Indicators on thematic level



9 institutions are expected to adopt PROLINE-CE action plan.
They are also expected to integrate the best practices into their daily workflows.

18 institutions are expected to apply GOWARE.

480 trained persons/stakeholders with more knowledge, trained at project events like conferences, workshops, round tables, panel discussions, and other project meetings



Project Results

Communication level



- national capacity building and transnational stakeholder dialogue (local authorities, interested communities, end users etc.) in order to reach a common approach towards sustainable transnational land-use and water management
- promoted achievements and measures proposed, and to the beneficiaries of intact environment and safe water resources



Project PROLINE-CE and its EU-relevance

Contributions to the **INTERREG programmes** (→EUSDR, EUSALP...), existing **EU directives** (Water Framework D., Flood D.) and **strategies** (e.g. EU 2020 Strategy)

„**Protection of drinking water resources** and mitigation of flood/drought impacts through sustainable and adapted land-use and water management“ - main topic of PROLINE-CE - is lined out in several **EU papers** and is a **common challenge** (CE SWOT analysis and studies, EU Blueprint to Safeguard Europe's Waters, EU Water Alliance)

→ PROLINE-CE provides:

- ✓ an overall frame for the implementation of best practices through a common vision of **integrated management for water protection** (GOWARE - Guide towards Optimal Water REgime)
- ✓ transfer of results and implementation through **DriFLU Charta** (joint signed declaration act) to **policy level**
- ✓ Development of **networks beyond borders** and project lifetime





Hubert SIEGEL
Austrian Federal Ministry of Agriculture,
Forestry, Environment and Water Management

Marxergasse 2, 1030 Vienna, Austria



www.interreg-central.eu/proline-ce



info@proline-ce.com



+ 43 1 71100 607 204



PROLINE-CE PARTNERS



MINISTERIUM
FÜR EIN
LEBENSWERTES
ÖSTERREICH



University of Ljubljana



... leben voller Möglichkeiten

