

TAKING  
**COOPERATION**  
FORWARD



*Final Conference*

14° May, 2020

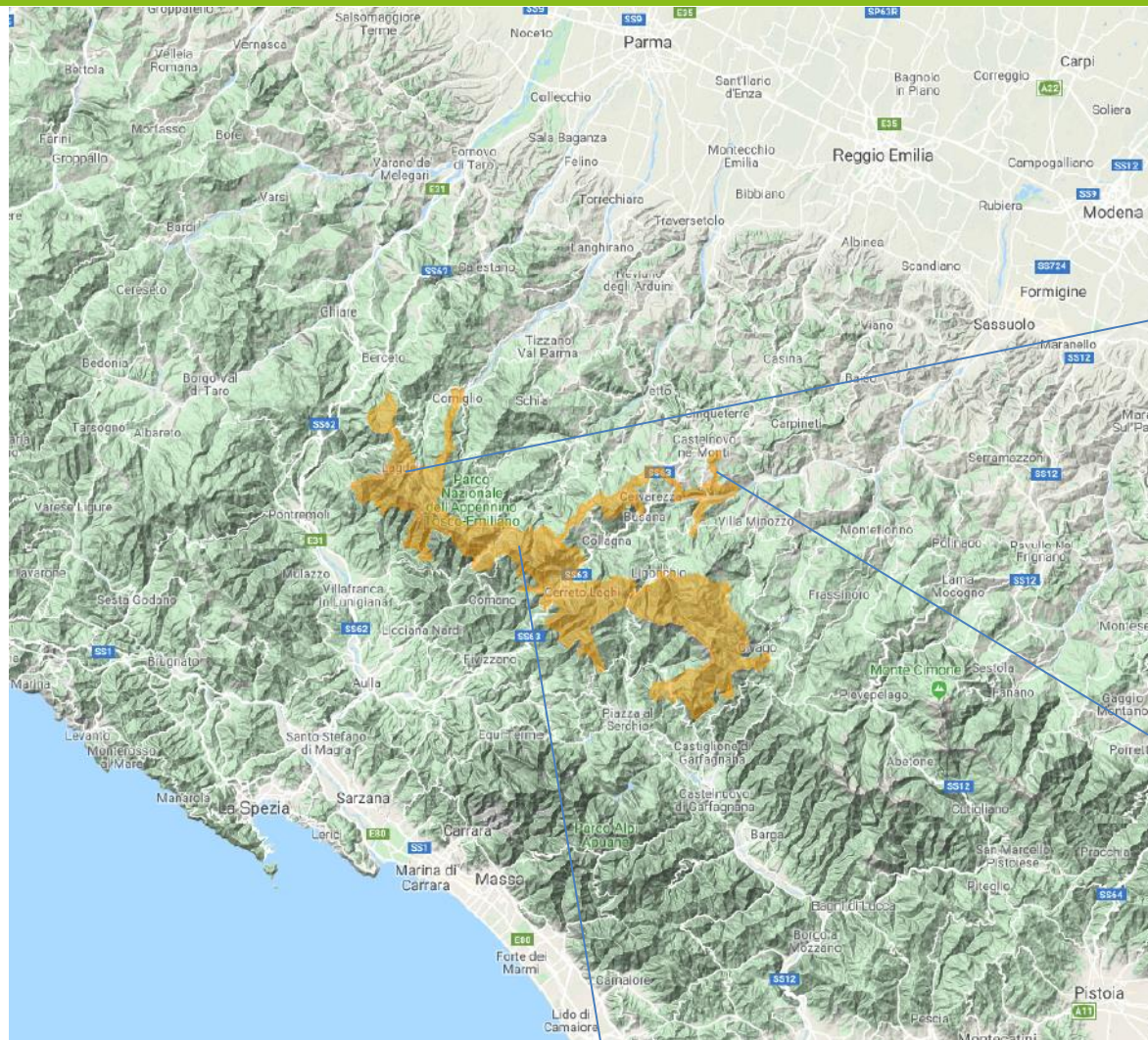


**PP01: Emilia Romagna Region – Appennino Tosco Emiliano  
National Park, Italy**



Chiara Viappiani, National Park Appennino Tosco Emiliano

# PP01: EMILIA ROMAGNA REGION – APPENNINO TOSCO EMILIANO NATIONAL PARK



Lagdei plain



Pietra di Bismantova



Appennino Tosco Emiliano National Park



## Lagdei plain

## PILOT ACTIONS

## Pietra di Bismantova

### Characteristics

- High touristic flow in a short period of time (mainly summer)
- easy to reach by car, high attractive as trips from the near cities: creating parking and mobility problems, more POLLUTION, carbon dioxide emissions, dust-related problems for walkers/bikers, discomfort
- place seen mainly for their recreational use, not considering the natural value

### Strategy

- *regulating the access by motorized vehicles (municipality decree)*
- *Parking payment (only week ends)*
- *Providing free Shuttle bus in period of more frequencies (July-August)*
- *Information and sensibilisation activities (leaflets distribution, gazebo with volunteers for providing information to visitors, guides on shuttle bus)*

### Monitoring tools:

*Questionnaires, shuttle buses and parking payment system to know the number, profile, and behaviors of tourists in the area.*

### Characteristics

- High touristic flow in a short period of time (mainly summer)
- easy to reach by car, high attractive as trips from the near cities: creating parking and mobility problems, more POLLUTION, carbon dioxide emissions, dust-related problems for walkers/bikers, discomfort
- place seen mainly for their recreational use, not considering the natural value

### Strategy:

- *Free shuttle bus service in period of more frequencies: week end from June to September*
- *Parking payment every day*
- *Providing free Shuttle bus Information and sensibilisation activities (NON FESTIVAL: a week of events, conferences about nature, man and spirituality focused on Bismantova area, sport activities, guided tours, music )*
- *Questionnaires given to local touristic stakeholders to be distributed to the tourists*

### Monitoring tools:

*Questionnaires, shuttle buses and parking payment system to know the number, profile, and behaviors of tourists in the area.*

## OUTPUT AND FUTURE

The shuttle bus  
works if there is  
a strong traffic  
regulation

focus on  
sustainability  
and tourism  
in protected  
areas



Network of  
management  
bodies

“map of collaborations”  
between the National Park  
and Biosphere Reserve  
and all the stakeholders  
included in all the  
developed projects

Stakeholders’  
involvement

to go on with  
Information  
and  
sensibilisation  
actions

promote the  
stakeholders’  
network and  
education

