

TAKING
COOPERATION
FORWARD

 Digital final conference | 9-10 March 2022



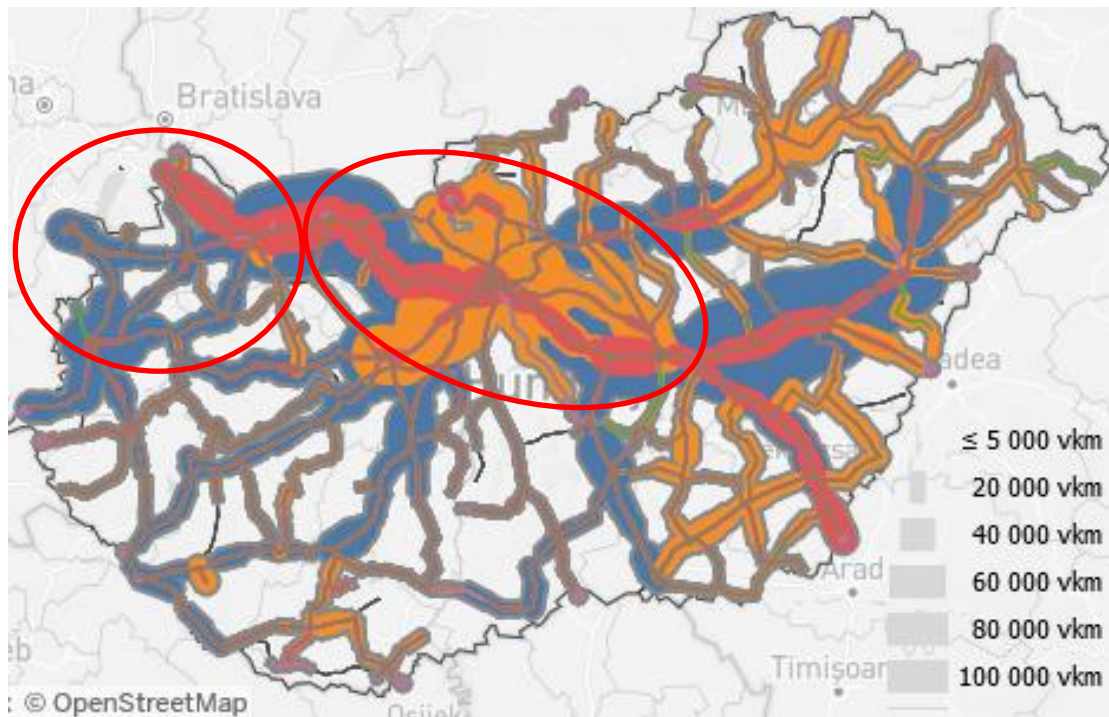
Corridor Capitalisation Plan for Budapest Region & Győr-Moson-Sopron
and Burgenland Region



Vilmos Oszter | Senior researcher | KTI Institute for Transport Sciences

TERRITORY ADDRESSED

Budapest Region & Győr-Moson-Sopron and Burgenland Region



Source: RNE, VPE

TERRITORY ADDRESSED

Budapest Region & Győr-Moson-Sopron
and Burgenland Region

Central and Northwestern
Parts of Hungary
Easternmost Austria
Dynamic border region
Manufacturing and services
Flat and fertile agriculture
Few hills on the main routes

Magyarország vasúti térképe
Rail transport map of Hungary



CHALLENGES AND NEEDS ADDRESSED

Finding track capacity on the key corridor sections - upgrade to the TEN-T technical standards

EU transport policy soft goals: sustainability, climate, fair competition
...hard goal: infrastructure building to increase cohesion (to support economic and social development) - making it with less environmental footprint

Several overlaps between corridors - uncoordinated developments, different section priorities

It is important to resolve (organizational) bottlenecks where the freight stands in 70-80 % of the total transport time



PROCESS AND ACTIVITIES REALISED

Policy research, data collection, stakeholder consultations

Several existing sectoral plan and policies

Territorial planning documents are following the new alignments with some time

Budapest Suburban Railway Strategy has been approved by the Central Government by the end 2021

Some major project's feasibility study (e.g. V4 high-speed, Budapest freight by-pass) are ongoing

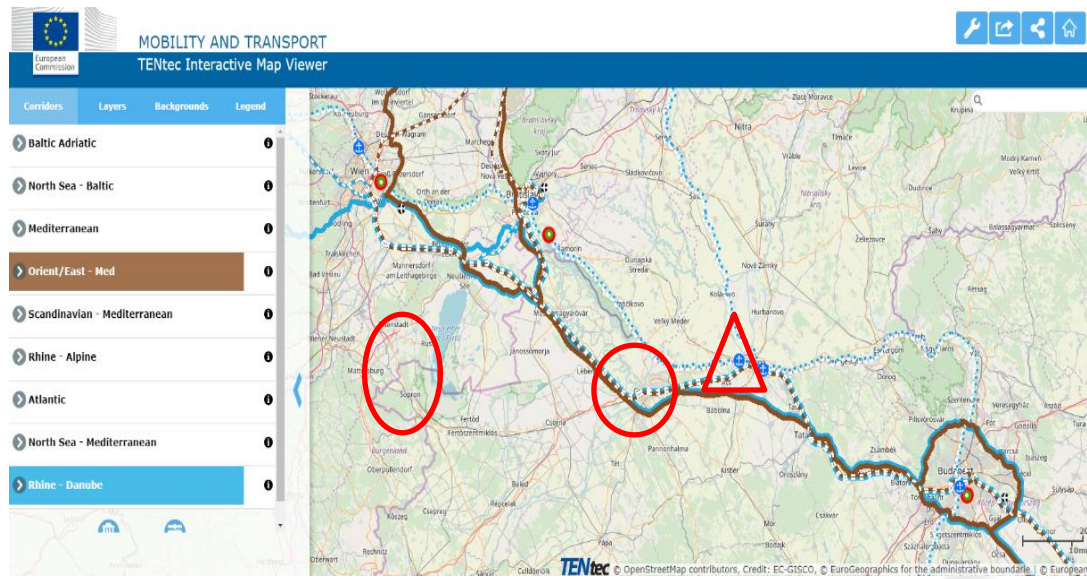
Several articles published on professional magazines and newspapers



RESULTS AND RECOMMENDATIONS

Győr-Moson-Sopron county—Burgenland region: missing triangle tracks

Triangle tracks at Ebenfurth/Wulkapodersdorf
Upgrade of Győr and Sopron railway hubs
Strengthen multimodal locations e.g. IWW port of Gönyű



Source: TENtec Interactive Map Viewer. EC Mobility and Transport

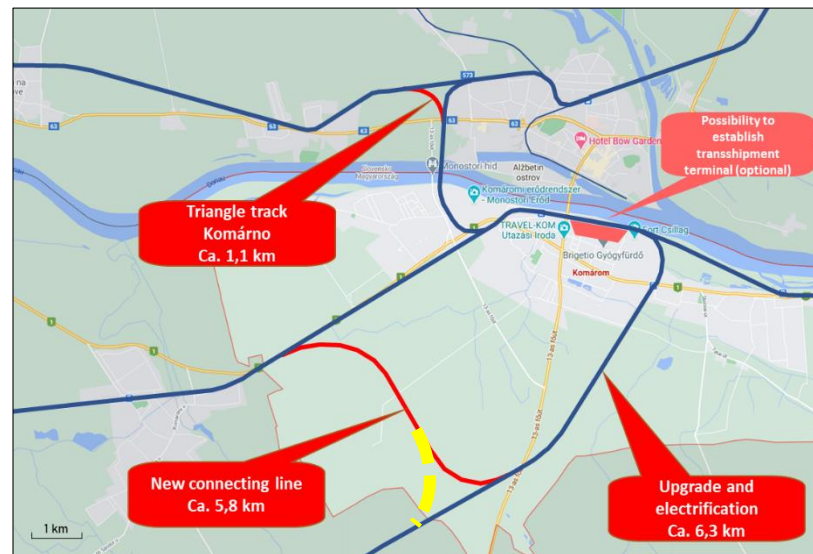
<https://ec.europa.eu/transport/infrastructure/tentec/tentec-portal/map/maps.html?corridor=4&layer=8,9>



RESULTS AND RECOMMENDATIONS

Between the areas - Komárom-Komarno delta tracks

Two triangle tracks (1-1 Hu-Sk)
Extra triangle option for low cost
Budapest by-pass freight railway(V0)
connection



RESULTS AND RECOMMENDATIONS

Budapest - less freight transit double (sub)urban trains by 2040

Important brownfield areas with good accessibility for urban renewal

Ongoing capacity upgrade on the Southern Circle Railway with new 3rd rail track over the Danube

Danube city-tunnel is progressing

Freight locations to be better served

V0 - regulation incentives for usage



FOLLOW-UP

Key projects are now being assessed and further planned

- Active contribution to the ongoing nationwide rail freight concept
- Continuous adaptation to the new challenges (new pandemics, war situation on important freight routes, etc.)
- Preparation for high-speed rail access
- Higher involvement of spatial planning experts
- Elaborate sustainable financial mechanism for urban renewal also in Hungary



THANK YOU FOR YOUR ATTENTION!



Vilmos Oszter
Senior researcher
KTI Institute for Transport Sciences



Website www.kti.hu



E-mail address: oszter.vilmos@kti.hu



Phone number +3613715985

