

# CRITICAL RAW MATERIALS UNIT



**WARNING GLOBAL CONCERN**  
CRITICAL RAW MATERIALS LEVEL: **TOO LOW!**

# RAW MATERIAL

non renewable and diminishing

## + SOME MAJOR REASONS FOR CONCERN:

### 1 HIGH SUPPLY RISK

Global production highly concentrated in non-EU countries

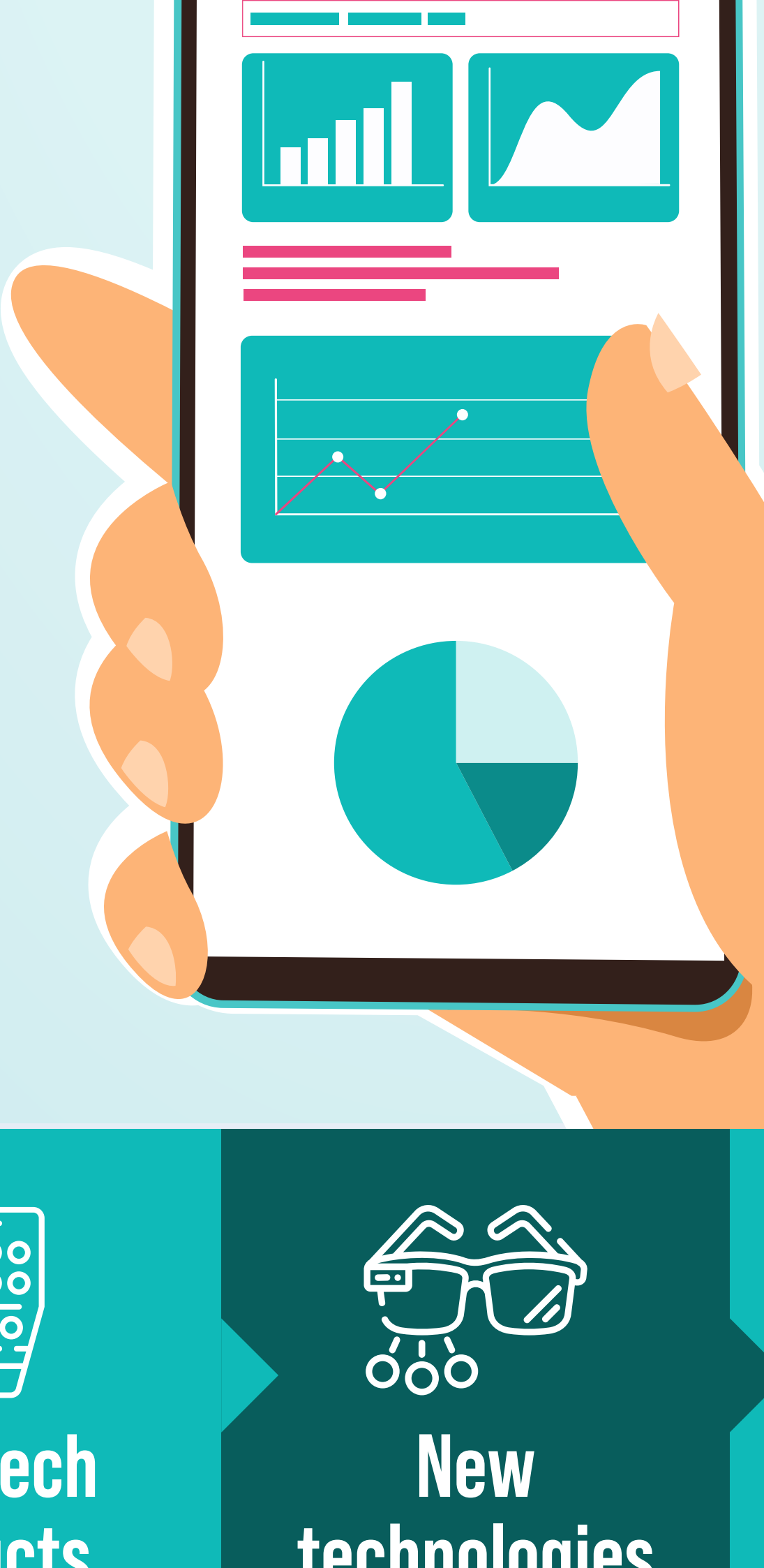
Prone to supply chain disruptions

Limited recycling and substitution



### 2 HIGH IMPORTANCE

Used in important products and technologies.



critical raw materials are

Strategically important for EU economy, job creation and social transition to green, digital and sustainable

High tech products

New technologies

e-Mobility

ICT

Defence

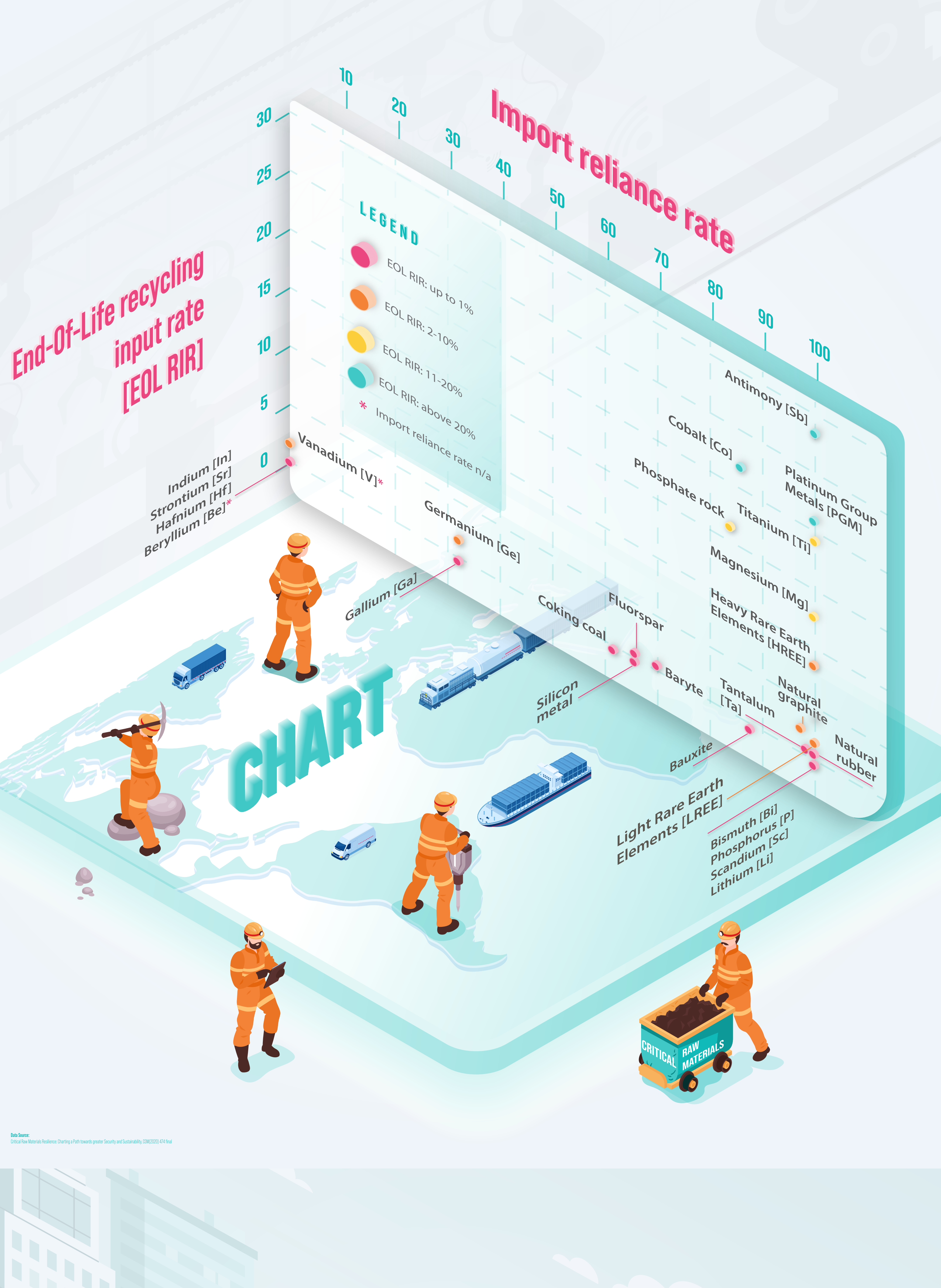
Aerospace

Robotics

## CRITICAL RAW MATERIALS [CRM]

# 30 ELEMENTS CONSIDERED CRM IN EUROPEAN UNION ASSESSED by:

## End-of-life recycling input rate (EOL RIR) in %



Data Source: Natural System Analysis of New Raw Materials: Barytes, Bromine, Tellurium, Helium, Natural Rubber, Phosphorus, Scandium, Tantalum and Vanadium, IFC 2021; Natural System Analysis of the Battery Value-chain: Cobalt, Lithium, Manganese, Natural Graphite, Nickel, IFC 2020